

Ground floor apartment, Basin 5 - Seychelles, Eden Island

Location: resort Eden Island, northeast coast of the main Seychelles island of Mahé

*Unit internal area: 65 m², unit covered area: 22.8 m², garden area: 89 m²
(1 bedroom, garden, private boat mooring, short-term rental licence)*

Price: USD 445,000 (incl. furniture) + transfer taxes
(5% Stamp duty, 1,5% Sanction Application Processing Fee, 1,5 % Notary Fee)



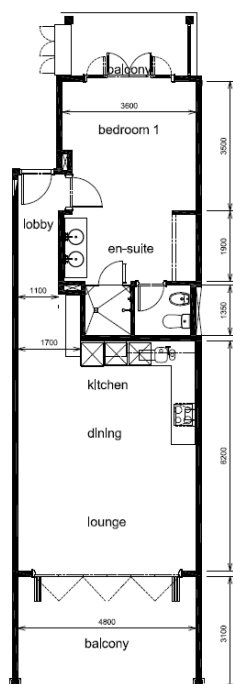
Location of the apartment and boat mooring



Basic information:

- Eden Island Resort is located on Eden Island next to Mahé, the largest island in the Seychelles, about 7 km from the Seychelles International Airport and about 5 km from the capital city of Victoria.
- The Resort provides very comfortable facilities - 4 sandy beaches, 3 communal swimming pools, fitness centre, tennis and padel court. Security service 24/7.
- Within walking distance is the Eden Plaza shopping gallery with a private medical health center Euromedical Family Clinic, shops, restaurants and cafés, pharmacy, bank, exchange office and Spar supermarket with grocery, drugstore, and others.
- This is a colonial-style apartment located on the ground floor of an apartment house in Basin 5 with a view of the marina.
- The apartment has an internal area of 65 m², 1 bedroom with en-suite bathroom and toilet, living area with dining area and kitchen, covered terrace with a total area of 22.8 m² and a covered golf buggy parking space.
- The apartment is fully furnished, air-conditioned and equipped with all electrical appliances. All this equipment is included in the purchase price.
- The apartment is surrounded by a landscaped tropical garden of 89 m² with direct access to its own boat mooring of 13 x 5 m.
- The owner of a property in Seychelles is entitled to apply for a long-term residence permit.

Floor plan:





Garden with direct access to its own boat mooring



Anse Bigorno beach (approx. 2 minutes walk from the apartment house)

